

Responsible Research and Innovation (RRI) in sustainability research

Györgyi Bela, György Pataki, Bálint Balázs, Eszter Kelemen, Tamás Szabó, Zoltán Bajmóczy, Tracey Wheatley,

ALTER-Net conference 2017: Nature and society: synergies, conflicts, trade-offs

2017.05.04.



RRI

- Responsible research and innovation (RRI) is an approach encouraged by the Horizon 2020 framework programme of the European Commission.
- Taking into account societal needs and expectations with regard to research and innovation.
- A transparent and inclusive process in which researchers and diverse societal actors work together.
- With the aim of developing solutions for the grand challenges, transforming our societies towards social justice and sustainability.

Outline

the concept and the interim results
of two ongoing RRI initiatives

SPARKS

Fotrris

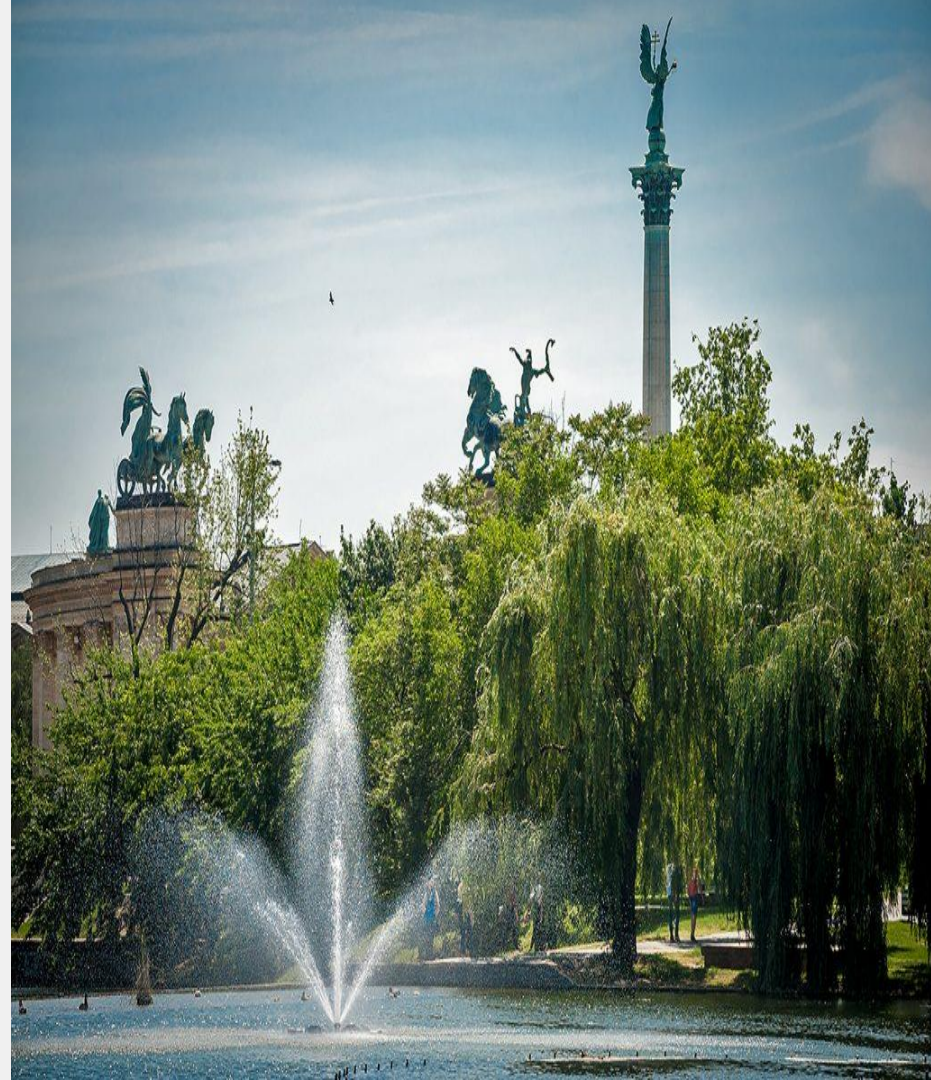
answer the questions





SPARKS

RETHINKING INNOVATION.
TOGETHER



SPARKS

- Sparks is a European project designed to awaken citizens' interest in Responsible Research and Innovation (RRI)
- A creative exhibition touring in 29 countries combined with hands-on activities (science cafés and other participatory activities).
- Many interactive participatory activities
- Participatory activities in Hungary: the green areas of Budapest, and the health of the urban population.

Reverse Science Cafe in Hungary

- The Reverse Science Café, contrary to the “ordinary”, not reversed one, provides more opportunities for the audience to think, and share their thoughts.
- The collection of promising research questions and potential research pathways that explicitly represent the interests of the people, and are based on their values. – Scoping RRI event
- To understand the connection between the position, extension, quality, and usage of the green areas of Budapest, and the health of the urban population.
- The final product: an inventory of research problems and questions.



FoTTRIS

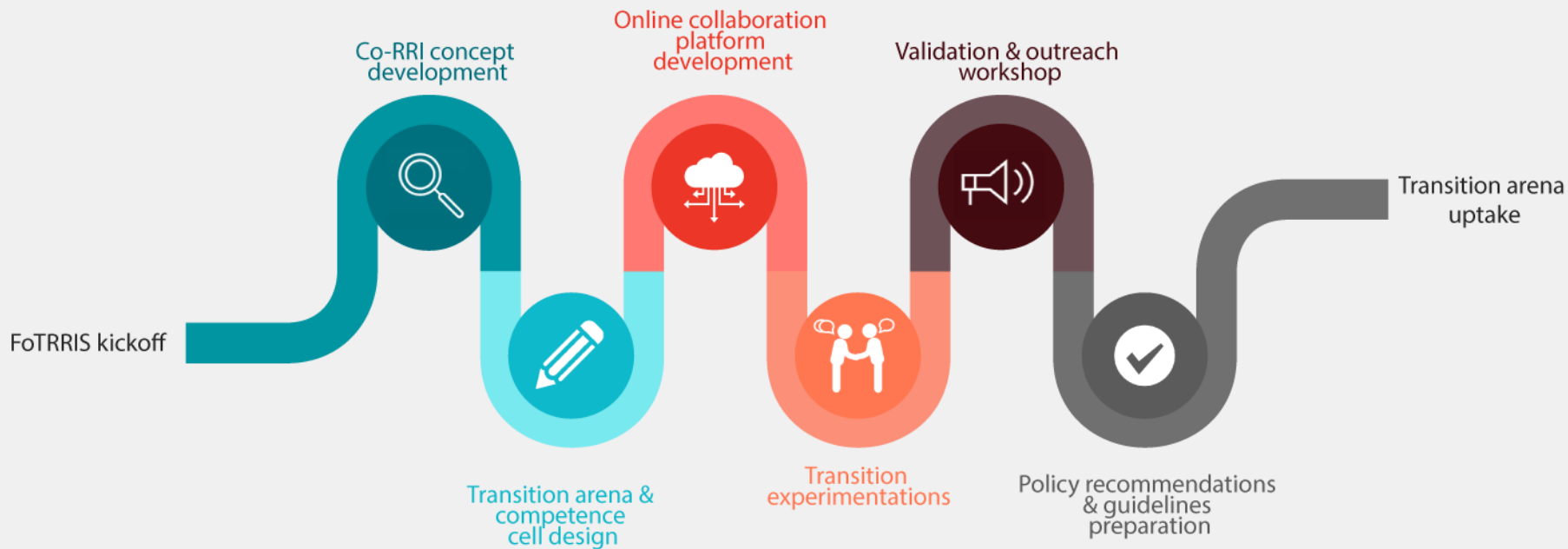
Fostering a Transition towards
Responsible Research and Innovation
Systems



FoTRRIS

- Transition experiment project: to foster a transition of the existing R&I system to a RRI system
- New governance practices to co-design transdisciplinary RRI-projects that are attuned to local needs, values and opportunities
- The design of transition arenas associated with a support unit called a competence cell
- Co-RRI Hub development

The process of FoTRRIS



The transition experiment in Hungary

- In which we test and refine the concepts of FotRRIS
- Creation and implementation of a local economic development roadmap in the Wekerle district of Budapest, Hungary
- A “multi-sectoral”, “multi-actor” dialogue

Questions and answers

- Well designed process of RRI could contribute to better understanding of trade offs and synergies.
- Legitimate process of RRI could contribute to identify, manage and resolve the nature-society conflicts.

Which are the most important lessons you learned? -designing elements of RRI:

- Involvement of experts and innovators: competence cell in Fottris is conceived as a small organisational unit, which functions as a local one-stop innovation platform that encourages various knowledge actors from science, policy, industry and civil society to co-design, -perform, and – monitor CO-RRI-projects
- Legitimacy could be enhanced by reasonable outputs or fitting with existing processes.
- Focus should be on the solutions.
- Flexibel organisational desing is needed.
- Socail learning should be promoted.



bela.gyorgyi@essrg.hu

www.essrg.hu

THANK YOU FOR
YOUR ATTENTION!

